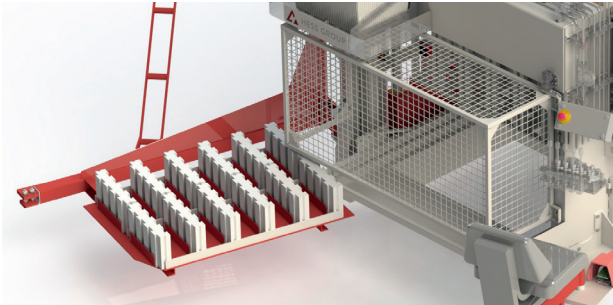
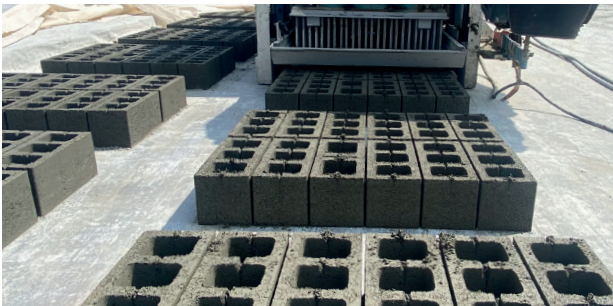




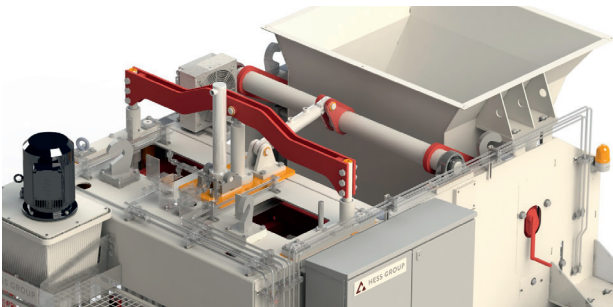
Production on the concrete floor



Polystyrene insert device (EPS)



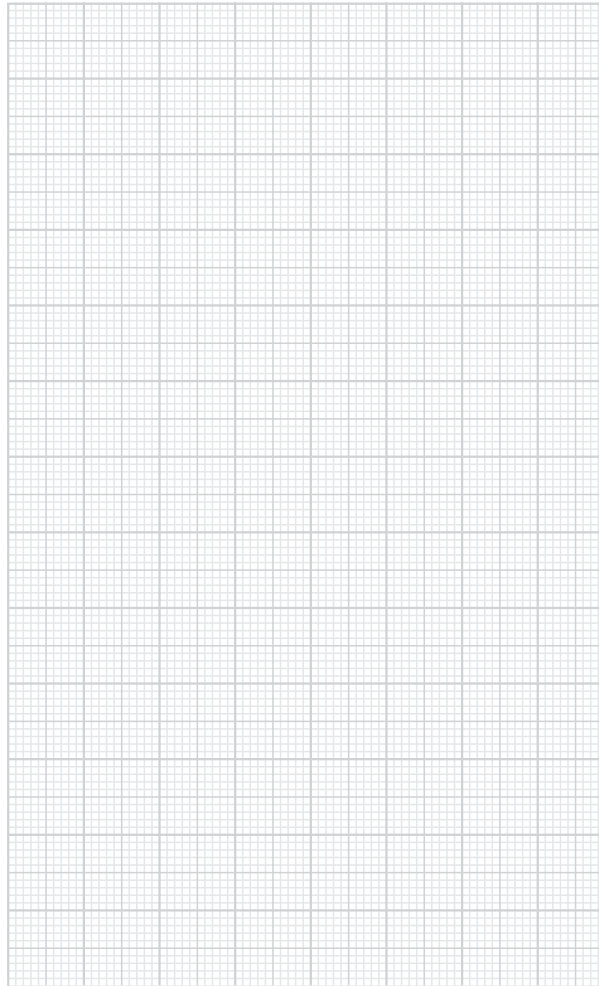
Hollow block production



BF 80 tamper head system

A member of **TOPWERK**

CONCRETE BLOCK MACHINE HYDRO-MAT BF 80-2 H



HESS Group GmbH

Freier-Grund-Straße 123
57299 Burbach-Wahlbach, Germany
Telefon: +49 2736 4976 0
E-Mail: info@hessgroup.com
www.hessgroup.com

We put concrete into shape.

www.hessgroup.com

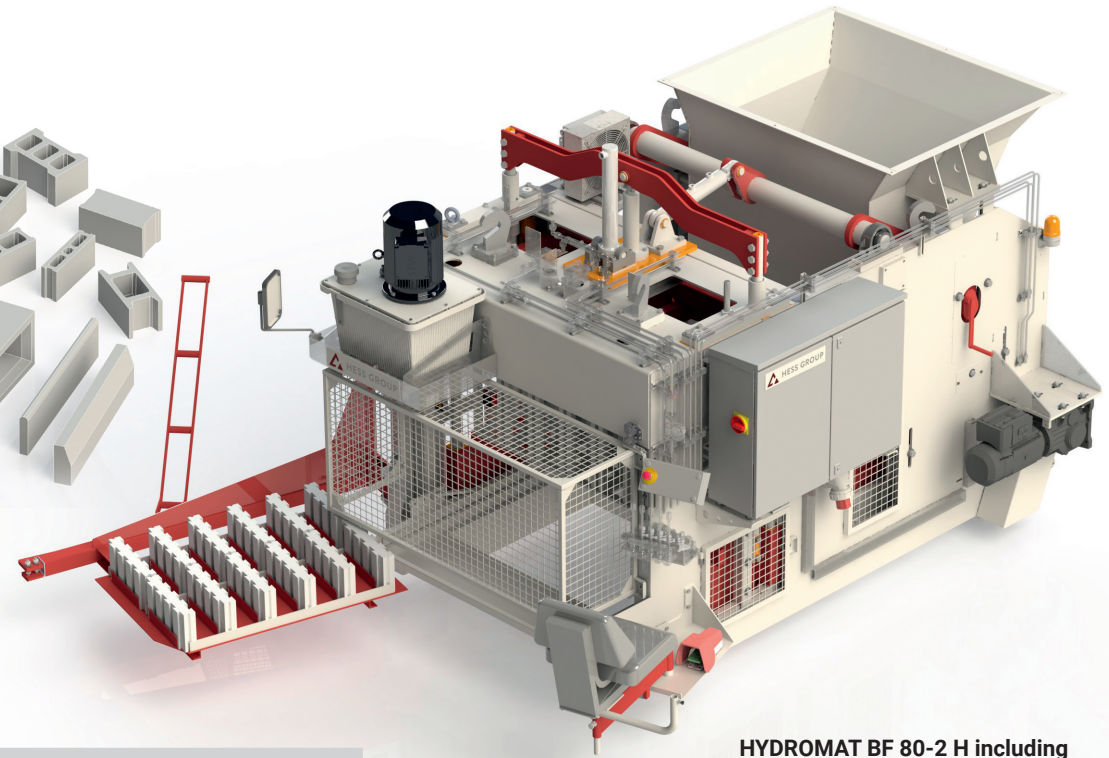
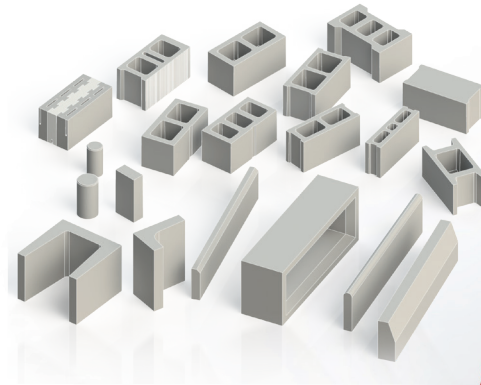
CONCRETE BLOCK MACHINE HYDROMAT BF 80-2 H

Mobile egg-layer execution for the production of

- hollow blocks
- solid blocks
- insulated blocks
- hourdi blocks
- curb stones
- chimney blocks
- palisades

Including

- Mechanical safety devices and visual warning devices, collision protection, mechanical load and filling carriage safety device (for maintenance work/ mould change)
- Steering: steering wheel drive connected to drive axle via gearbox, hydraulic lifting device for steering wheel
- Filling carriage with central drive via 1 hydraulic cylinder with wiper on both sides for optimum, clean mould filling
- Mould and tamper head guided on 4 columns
- Demoulding via central hydraulic cylinder and guidance on 2 columns
- Two tamper head vibrators and two high efficient mould vibrators
- Easy mould change due to automatic centring device
- Level control for filling car / filling car rails, filling car table/ concrete silo by winches. All devices are adjusted simultaneously with 2 manual winches when the mould height is changed
- Spring-loaded, adjustable seat for operator
- Adjustable sunshade directly above the operator
- Abrasion-resistant and dynamically loadable polyurethane wheels to protect the production surface
- Dirt deflector brushes in front of the wheels
- Large rear-view mirror for lane control
- Pressure gauge for checking the hydraulic pressure
- Usage of moulds from the existing BF 80 machines possible
- Electric control with the standard package is executed as a conventional control with only contactors



Details

Production area	1,250 x 1,000 mm
Production height	min. 190 mm max. 330 mm
Tamper head vibration	2 frequency vibrators, each 1.1 kW
Mould vibration	2 high frequency vibrators HESS each 1.5 kW
Concrete hopper	1,000 l
Hydraulic pressure	190 bar
Travel gear	gear motor, with integrated inverter
Total connected load	18 kW
Weight	approx. 5,800 kg
Control	Conventional electric control

Capacity

Hollow block, 200 x 200 x 400 mm	
Products per cycle	12 pieces
Production per shift / 8 hours	approx. 10,000 pieces

HYDROMAT BF 80-2 H including polystyrene insert device, height adjustment for concrete silo, table plate and fillerbox rails

Options

Semi-automatic control by modern SIEMENS TIA-CPU including gear drive motor with integrated converter

Polystyrene insert device

4 mould vibrators



Please scan for more information