

A member of **TOPWERK**

 **HESS GROUP**

RH 760/780



WE PUT CONCRETE INTO SHAPE



Electric agitator drive



Automatic height adjustment



Pneumatic mold and tamper head clamping



Highly dynamic CNC hydraulic system

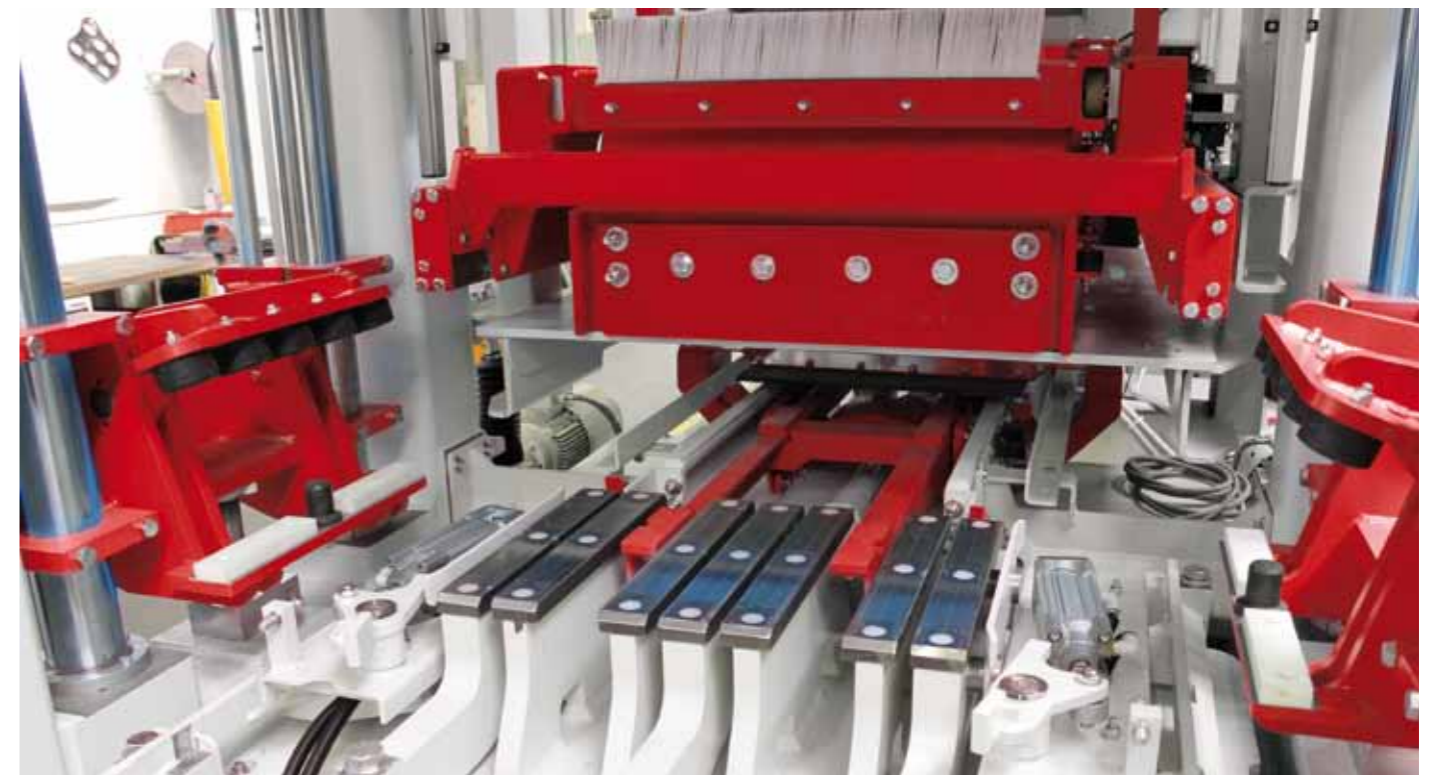
Suitable. Advanced. Precise.
The RH 700 Series.

Machines of the RH 700 series are equipped with the proven M- technology. The production area is available from 3 to 6 blocks per Cycle. The high quality results derived from advanced vibration technology and height control exactness are now possible across a wide range of products, from 25mm (1 inch) pavers to 300mm (12 inch) high wall units.

- Fully automatic mold change with height adjustment mechanism
- Designed to use existing foundation
- Suitable to use existing molds
- Operator controls with complete diagnostics
- The dimensional exactness and high density for improved durability

Technical data*

		RH 760	RH 780
production board (mm)**		660 x 470	1.070 x 700
production area (mm)**		640 x 450	1.050 x 680
min. product height (mm)		25	25
max. product height (mm)		305	400
dead weight approx. (kg)		18.000	27.000
paver 10x20x6 without face mix	cycle time (s)	8,5	9,5
	m ² in 8h	692	1546
	qty stones/form	12	30
paver 10x20x6 with face mix	cycle time (s)	-	-
	m ² in 8h	-	-
	qty stones/form	-	-
hollow block 20x40x20	cycle time (s)	8,5	9,5
	quantity in 8h	8.640	12.884
	qty stones/form	3	5

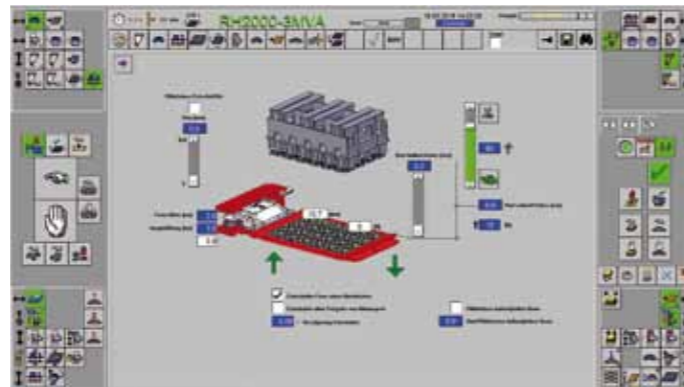


Vibration table

*Production capacities are calculated on 85% basis and depend on machine configuration, used recipes, raw materials, pallet handling, mold characteristics as well as utilized production boards. Technical Data are subject to change. **other production board sizes available.

HESS Control system.

- Control Panel adjustable for height and screen angle to match operator's preference or need
- User Interface has touched panel clearly arranged with intuitive graphics
- Symbolic buttons manage specific parameters to improve understanding within shortest time
- Adjusting one parameter automatically and correctly changes corresponding pre-set parameters without further complex input of many parameters
- Many adjustments are set by a simple slider to allow newer operators to become familiar with logic and operating knowledge



Visualisation of the mould and tamper head



Remote control

Further features of operator controls:

- Automatic mold change can be supervised by a remote control directly at the machine
- Settings for molds and product groups are saved and automatically retrieved
- Operator control extends throughout entire plant work centers (Mixing/Batching; Production; Curing; Handling; Treatment; and Packaging)



Hess production statistics 4.0.

It is important for operators and supervisors to have access to critical production data to assess the performance status of the product orders to better serve customers and manage profitability. All relevant information is collected in a Microsoft SQL database is retrievable by authorized managers on their monitors, or remotely via web-based visualization screens.

Features of the HESS Production Statistics:

- Multiple facilities can be monitored and evaluated
- Data is accessible via mobile devices (smartphones or tablets) anytime and anywhere
- Included as standard with new installations. Retrofits are possible
- Data for each work center (mixers; production machines; finger cars; curing chambers; splitters; etc.) are collected and tracked
- Data is available for import into business system

As the industry demonstrates increasing digitalization of production processes (Industry 4.0) the HESS Production Statistics supports continuous improvement programs and other manufacturing excellence initiatives.

- Digital chamber and storage administration
- Link to ERP Systems (SAP, Navision, Oracle)
- Integration of parametric value data for quality control
- Product tracking
- Integration into customer-specific order management



HESS After Sales Service.

Our expert service team is available anytime to answer any question you may have. Our primary goal is to support your operation as if it were our very own. We are proud to share the expertise gained from our global experience for your benefit. This industry knowledge supports the following areas of our supply chain departments:



Spare parts

High quality spare parts and competent technical advice - worldwide



Help-Desk

Problem solving with capable assistance – around the clock



Teleservice

Efficient assistance and technical support via teleservice



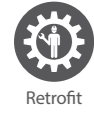
Monitoring

Secure – fast – information available everywhere



Consulting

Professional guidance on all questions regarding process engineering



Retrofit

Optimized retrofits due to continuous developments



HDPS

HDPS Software - Your benefits: Information is available, wherever it is needed!

- In production and maintenance
- In logistics regarding the optimization of parts inventory
- In material scheduling to procure necessary spare- and wear parts
- Customized information
- More efficient communication between operator and service technician
- Customer-specific language possible



Training Academy

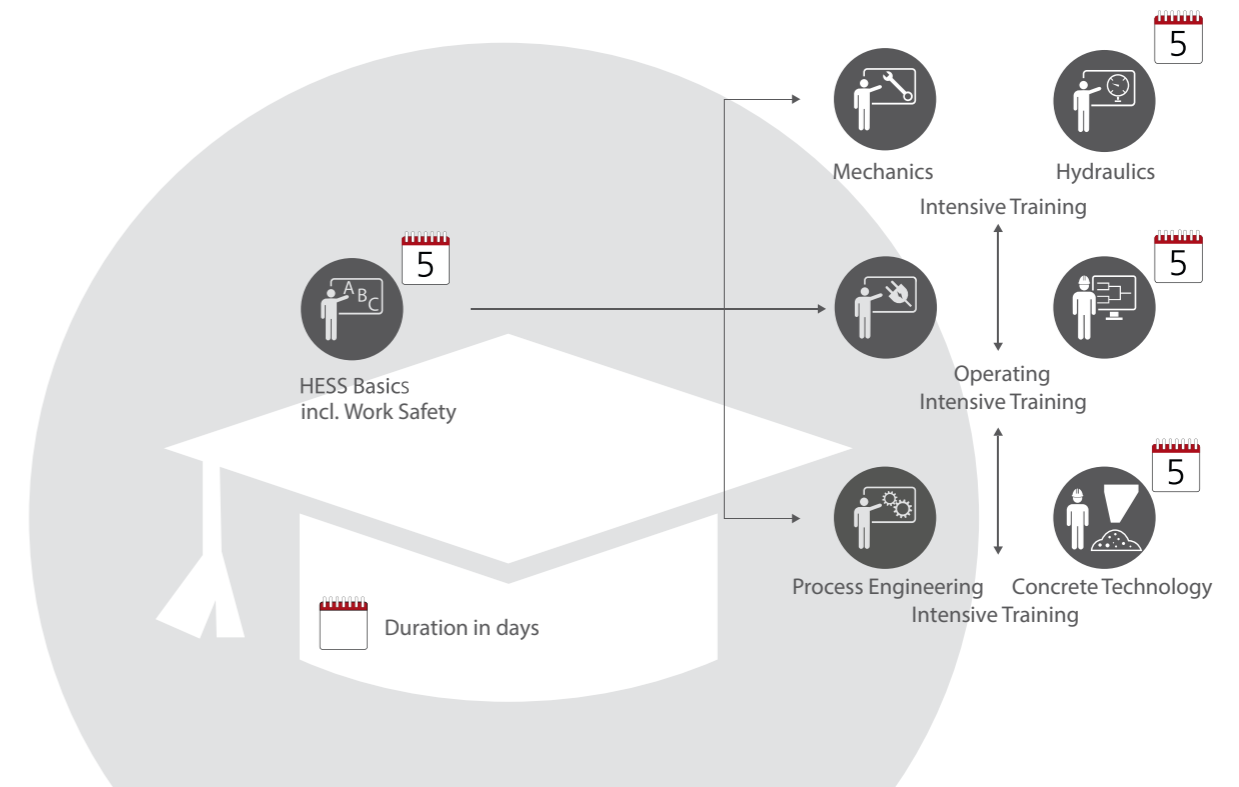
The HESS After Sales Service offers training programs for your staff near the headquarters in Burbach:

- Consecutive training courses
- Gradual training in: Machine operation, maintenance and concrete technology

Benefit from our know-how and many years of experience :

- Practical exercises with specific designed models or machinery parts
- Visualization of complex motion sequences using animations and videos
- Digital transmission of training material by tablet
- Acquired knowledge available anywhere and anytime
- Optimum training and know-how transfer from the beginning
- Systematic gain of expertise by intensive training

Productivity increase by Best Practice, prevention of drop outs and reduction of setup times through an expertwise work approach are just a few advantages resulting from the training.



HESS Group GmbH

Freier-Grund-Straße 123
57299 Burbach-Wahlbach, Germany

Phone: +49 2736 4976 0

Fax: +49 2736 4976 620

E-Mail: info@hessgroup.com

Internet: www.hessgroup.com

